


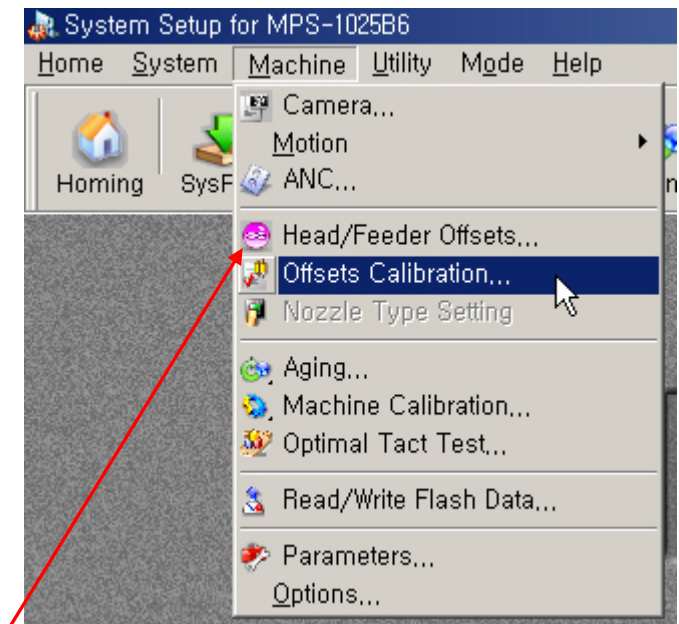
<div></div> <div>Mirae</div>	Service Information	Align Offset, Offset Calibration			
		Model	All	Submitted	Colin Oh
		Part	Head	Date Issued	26 April 2005
		Revision	1.0	Date Revised	26 April 2005

## Align Offset Teaching

- This calibration is to teach the center of head camera position in the machine.

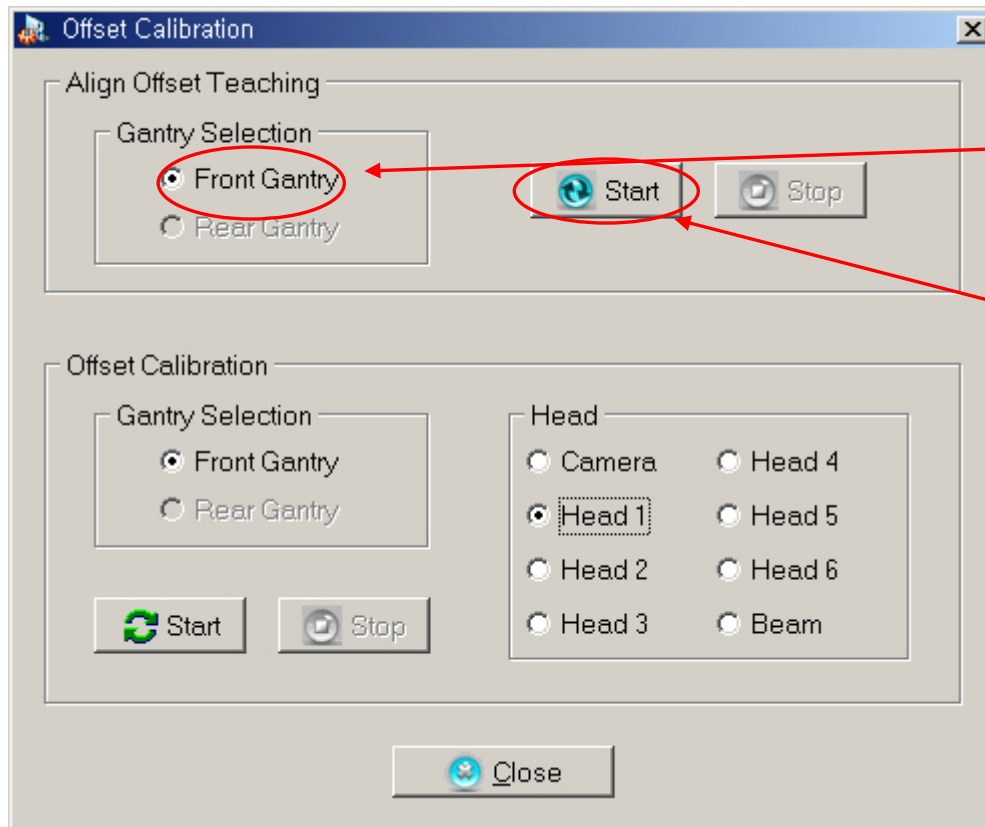


1. Remove the front Feeder Base and install the '**Align Offset Jig**' on the 'Center Left Camera (Camera number 2).
2. Turn on the Camera 2 and see the mark from the vision monitor and adjust the jig position. The mark should be almost the center of the cross hair.
3. Execute 'Msetup.exe'.
4. Click on 'Eng. Mode' icon then 'Password Verification' window will be open.
5. Click 'OK' button then you can access 'Machine' menu.
6. Select 'Offsets Calibration' in the 'Machine' menu.



## Align Offset, Offset Calibration

Model	All	Submitted	Colin Oh
Part	Head	Date Issued	26 April 2005
Revision	1.0	Date Revised	26 April 2005



If you have enough 'Head Offset Nozzle Jig', you can calibrate all the heads at once.


1. Select 'Front Gantry' and click on 'Start', then the machine performs the calibration automatically.

2. Head camera and the module camera will read the mark and calculate the head camera position.

3. During the calibration, 'Stop' button will be activated and 'Start' button will be inactivated.

4. If the calibration is finished, 'Start' button will be activated and 'Stop' button will be inactivated.

5. Perform this calibration 2 or 3 times to make sure the calibration is saved completely.

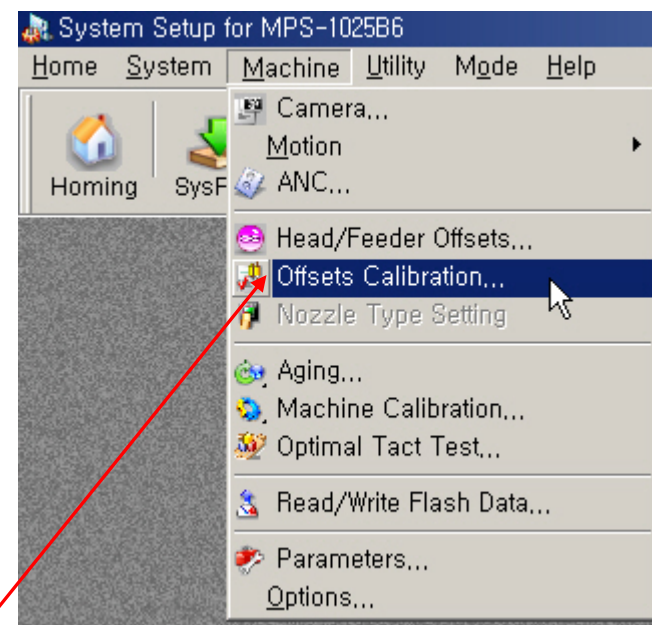
 <b>Mirae</b>	<b>Service Information</b>	<b>Align Offset, Offset Calibration</b>			
		<b>Model</b>	All	<b>Submitted</b>	Colin Oh
		<b>Part</b>	Head	<b>Date Issued</b>	26 April 2005
		<b>Revision</b>	1.0	<b>Date Revised</b>	26 April 2005

## Offset Calibration

- This calibration is to teach the center of the head (nozzle).

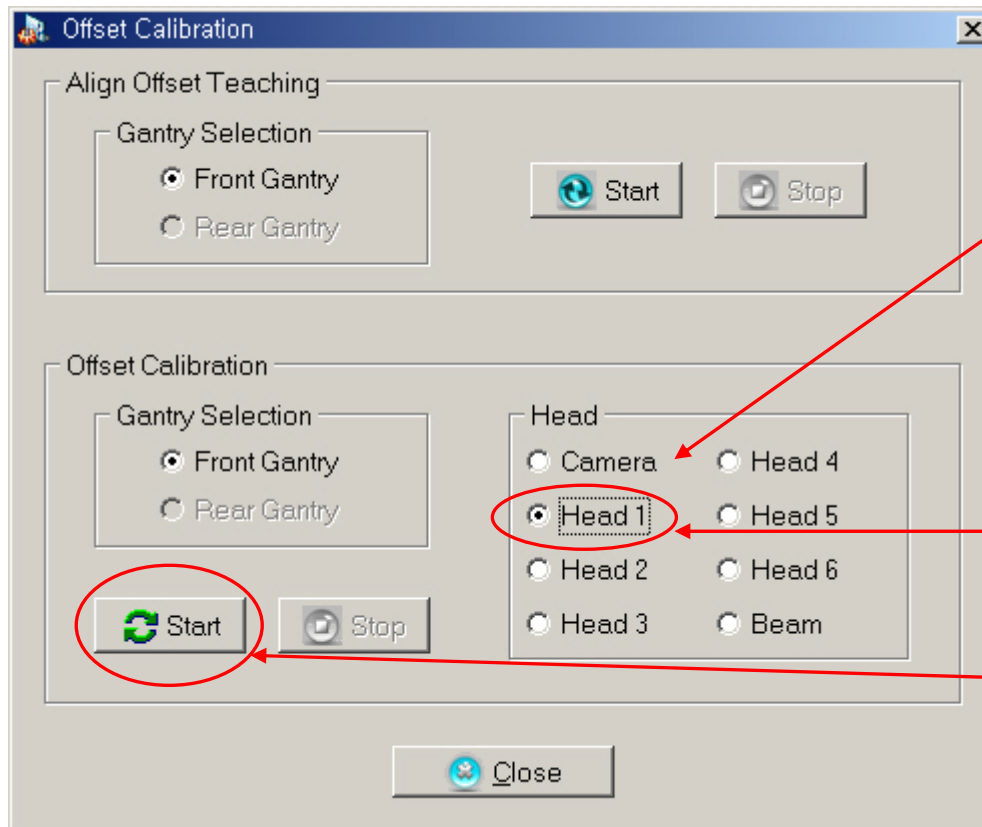


1. Insert the 'Head Offset Nozzle Jig' into the nozzle socket.
2. Execute 'Msetup.exe'.
3. Click on 'Eng. Mode' icon then 'Password Verification' window will be open.
4. Click 'OK' button then you can access 'Machine' menu.
5. Select 'Offsets Calibration' in the 'Machine' menu.



## Align Offset, Offset Calibration

Model	All	Submitted	Colin Oh
Part	Head	Date Issued	26 April 2005
Revision	1.0	Date Revised	26 April 2005



If you have enough 'Head Offset Nozzle Jig', you can calibrate all the heads at once.

1. Select 'Camera' and click on 'Start' then the machine performs the calibration automatically.

If you have only one jig, you have to calibrate the head one by one.

1. Select the head that you inserted the jig and click on 'Start' button.

2. If the head is finished, move the jig to the next head and calibrate.