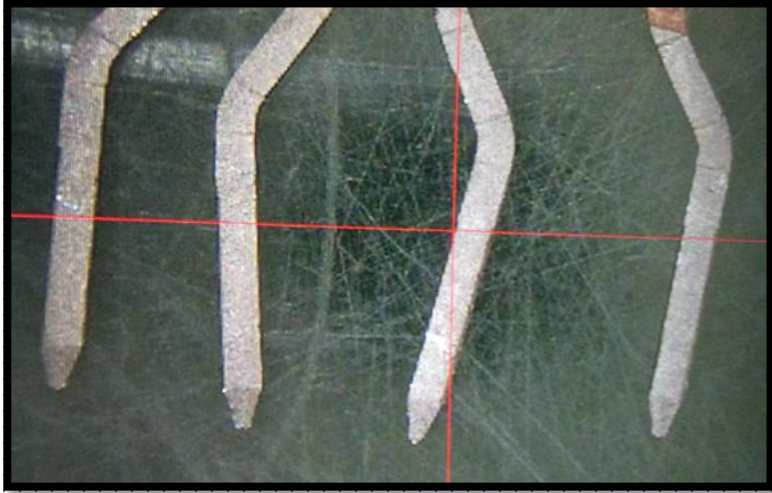
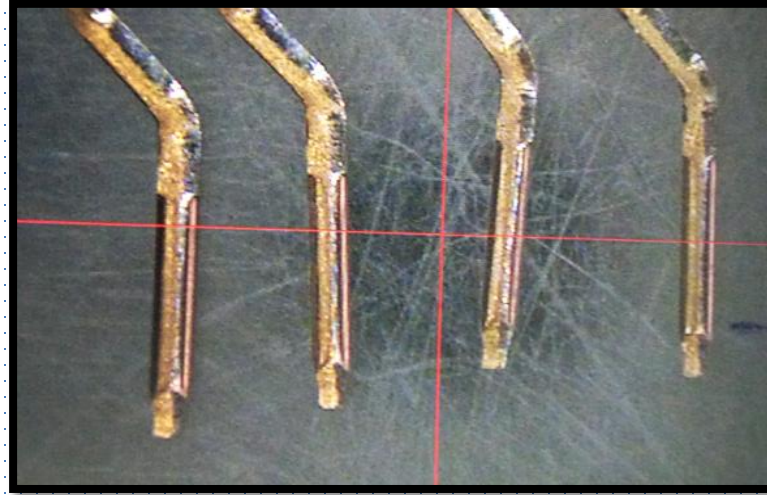


Connector Terminal Appearance Comparison :-



Connector Terminal A
product



Connector Terminal B
product

Observation – Plating on A Product Connector terminal done on all 4 side
But In B product connector plating done on 2 side only.

Connector Terminal Soldering Result :-

Soldering Result a product -
OK



Connector Terminal

Soldering Result B product -
NG



Connector Terminal

Remarks – Uneven Plating may cause for terminal soldering issue