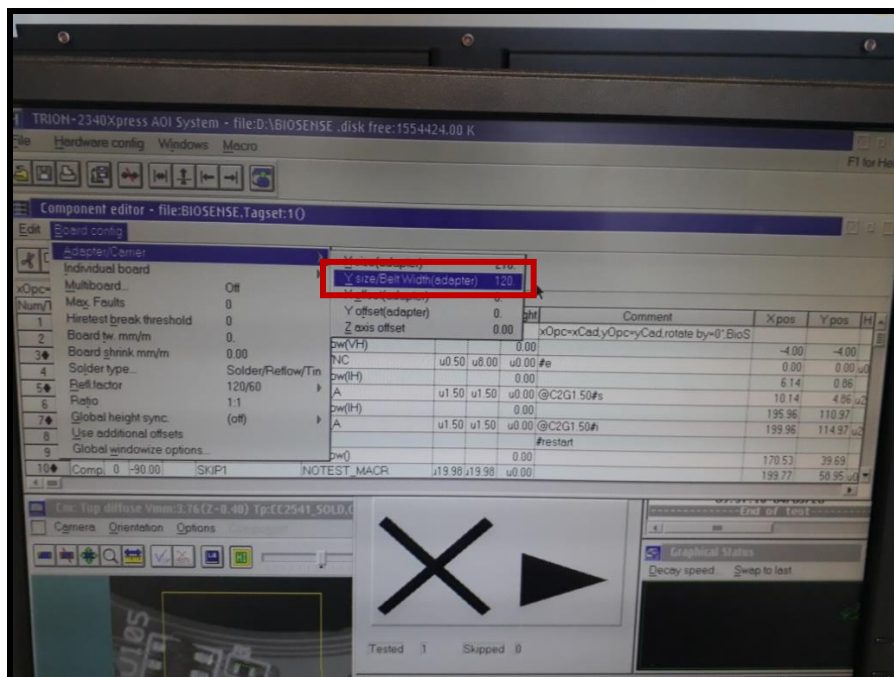
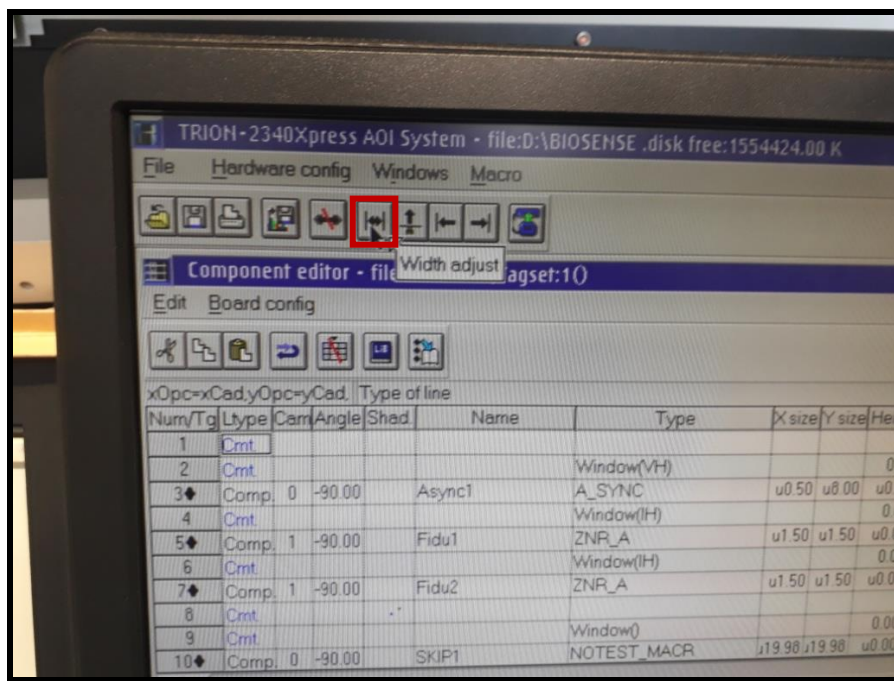


1. INTRODUCE A BOARD (MANUAL MODE)

- 1) Set the Y size of the board in *Y size/Belt Width(adapter)* box.

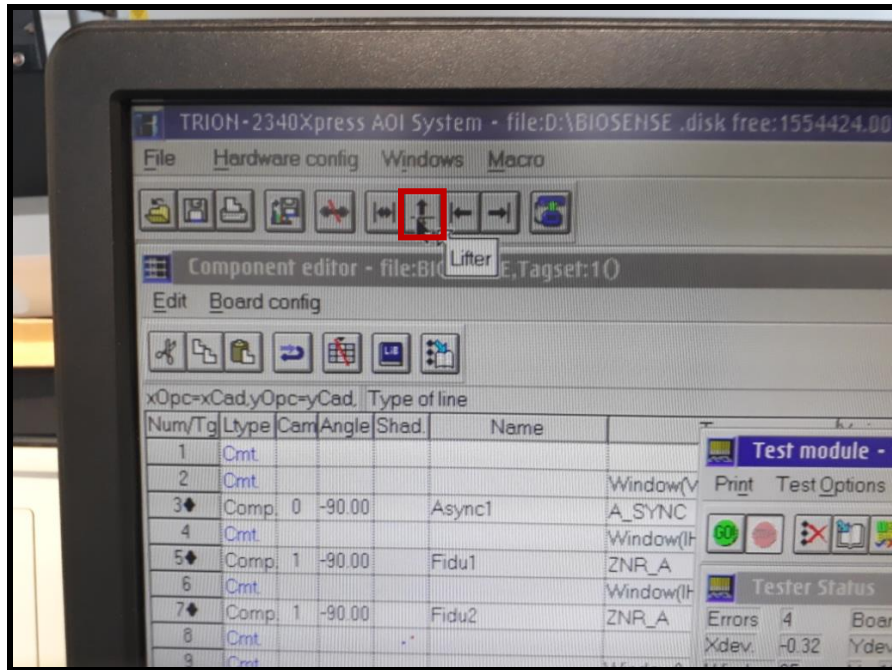


- 2) Press *Width adjust* button. Now the machine will adjust the belt to the desired size.

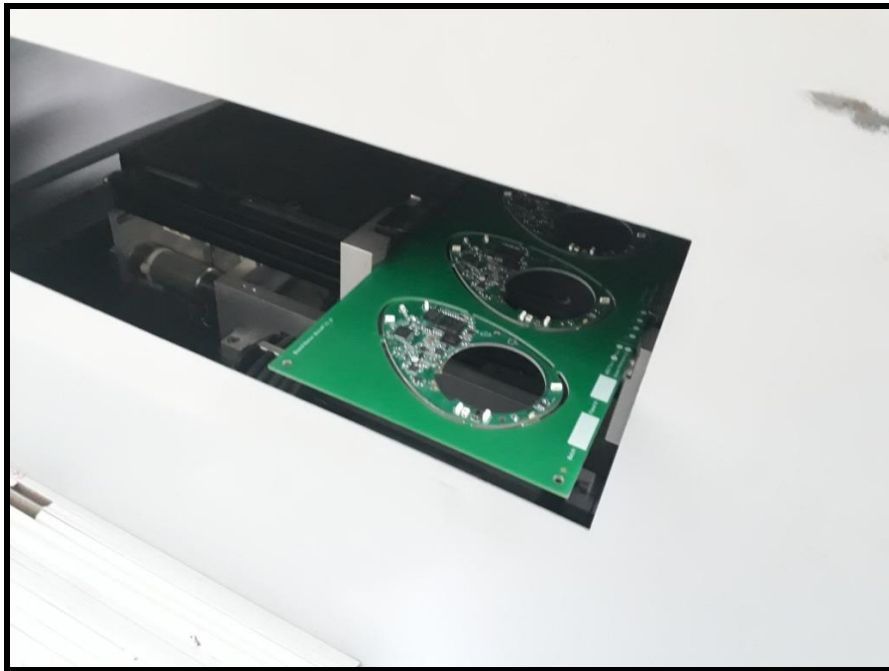


Full Manual available at <https://aneryn.com/creation/trion-2340-manual/>

3) Press **Lifter** button. A prompt will appear saying you can enter the board.



4) Enter the board inside the machine. There is no need putting your hand within.

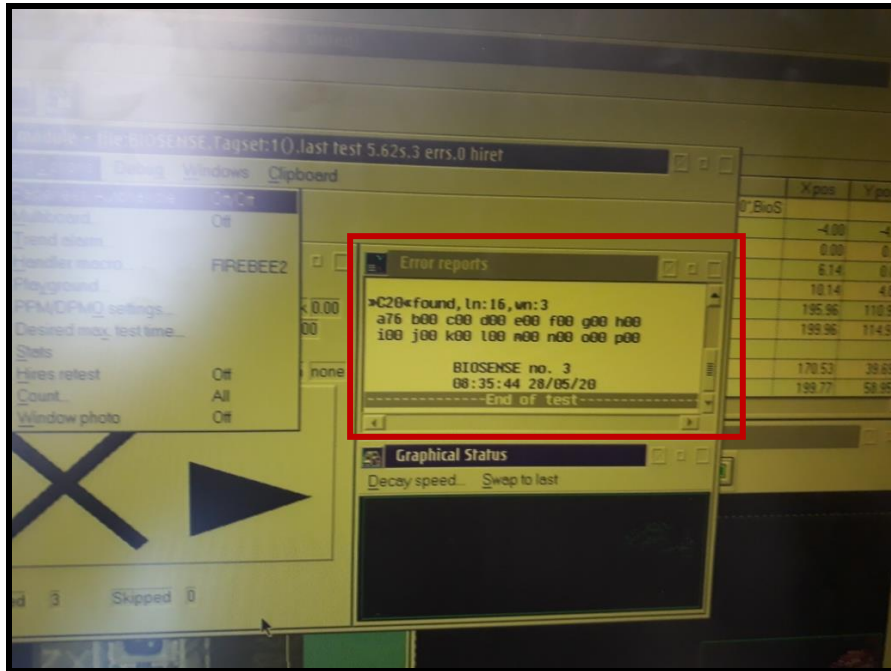


5) Press **OK** to the prompt.

6) Done! Now the board is correctly within the machine.

23. TEST REPORTS

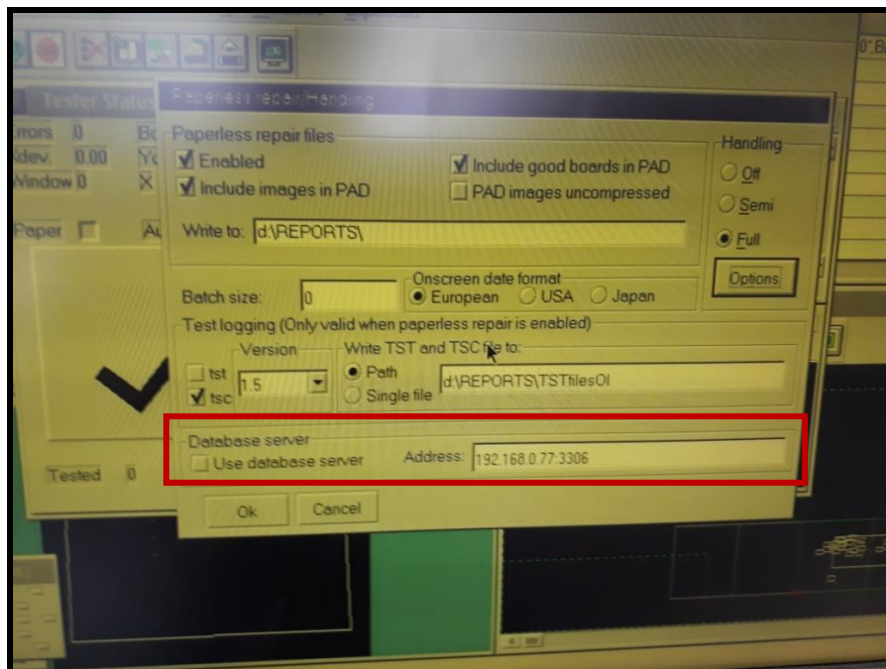
- Reports of the current test are showed in *Error reports* window within *Test module* window. Nevertheless, they are not saved anywhere, they are just to be checked at the moment of the current test.



- Report files *.TSC* are stored in the selected directory. These files are simply *.TXT* files with information of all faulty components, indicating which error (register), bar code number of the board, which miniboard, etc. They do not include pictures, just text.
- More elaborated report files are *.PAD* or *.PHD* that are stored in the selected directory. These reports can contain no images, compressed images and uncompressed images of faulty or tagged components, depending how you set the options, see [TEST IN AUTOMATIC MODE](#). These files are supposed to be opened with repair station machine software *vp64.exe*. With this software you can classify each error as a real error or false alarm in order to use it as trainable data in *OptiMate* (*.PAD* or *.PHD* files can be opened by *OptiMate* as *.OAD* files). These files can also be opened using *YIELD Advisor* software from Orbotech that is abandoned. To extract information about these files, use [PAD extract](#) from Aneryn. [PAD extract](#) turns *.PAD* or *.PHD* files into a Microsoft Excel or Libre Office sheet with all pictures.

24. NETWORK CONNECTION

- The software has an option to connect reports to database server which is managed by a software called *YIELD Advisor* from Orbotech that is abandoned. It is not possible use this option.
- In *Test module* window, within *Test Options* tab in *Paperless/Autohandle* there is an option to put IP and port of the server. It sends reports in *.PAD* or *.PHD* format.



- The server apparently uses an SQL database but it is not possible to bypass *YIELD Advisor* creating an own server since Trion's software waits for a kind of acknowledge after trying to connect with *YIELD Advisor*.
- Another option to connect Trion's computer with network consists in using an FTP server. Trion's computer can connect using FTP commands in *OS/2* command prompt as a host to a remote server. However, it is not possible to create an FTP server in Trion's computer, so this connection is only possible if Trion's computer is the host and the server is placed on another computer, using [FileZilla software](#), for example.

Full Manual available at <https://aneryn.com/creation/trion-2340-manual/>

- The latest and the best option consist in using a shared folder. Trion's computer can share folders easily but to be able to reach this folders using another computer, the following restrictions are applied.
 - The other computer has to have Windows XP as maximum, as the protocol *NetBEUI* is required. This protocol only works in Windows XP as maximum (some information mention that is possible in Windows Vista but it is not tested).
 - Windows XP computer can be a real computer or just a virtual computer.
 - *NetBEUI* protocol is present in the same Windows XP installation CD, placed in *VALUEADD\MSFT\NET\NETBEUI*.
 - This protocol has to be installed only in Windows XP computer, not in *OS/2* computer (Trion's computer).
 - To install it, follow these steps in Windows XP virtual computer.
 - 1) Click *Start*, click *Control Panel*, and then double-click *Network Connections*.
 - 2) *Right-click* the adapter you want to add *NetBEUI* to, and then click *Properties*.
 - 3) On the *General* tab, click *Install*.
 - 4) Click *Protocol*, and then click *Add*.
 - 5) Click *Have Disk*, insert your *Windows XP CD-ROM*, open the *Valueadd\msft\net\netbeui* folder, click the *Netnbfi.inf* file, and then click *Open*.
 - 6) Click *OK*, and then click *OK* to complete the installation.
 - If your router has *AP isolation* enabled, either using a real Windows XP computer or a virtual one, it has to be LAN connected (not WiFi), since the *OS/2* computer is connected to LAN. *AP isolation* means that LAN connected computers cannot reach WiFi connected computers.

Full Manual available at <https://aneryn.com/creation/trion-2340-manual/>

- To share a folder in OS/2 computer, *Right-click* on the desired folder and *Left-click* on *Start sharing...* Give access to all users.

